



Instructions for Ladder Rack MP68109

Suitable for MP711, MP712, MP715, MP6810, MP6812, MP6815, Erde102, Erde122 & Erde SY150 Trailers

Contents

1 pair vertical support bars	2 horizontal support bars
2 bracing bars	2 M8x15 bolts
6 M8x25 bolts	8 M8x40 bolts
16 M8 locking nuts	16 M8 washers

Note – it may not be necessary to use all parts provided

Tools You Will Need

- 1 x 8.5mm metal drill bit and electric drill
- 2 x 13mm spanners
- 1 x 12mm spanner
- Safety equipment, such as goggles and gloves when drilling
- Pencil or centre punch



Assembly Instructions

1. Offer up one of the vertical support bars to the front of the trailer side panel. Ensure that the support bar plate is positioned against the body of the trailer, with the square tube section as close as possible to the front (vertical) edge of the trailer body. The bottom of the vertical support bar should be level with or near (but not below) the bottom of the trailer base panel.
2. Four mounting holes are provided at the bottom of each vertical support bar, two in the tube and two in the plate. One upper and one lower mounting hole in each vertical support bar should be used as a minimum. The holes used will vary according to the model of trailer. Sufficient fixings are provided for all holes to be used if required.
3. For MP6815/SY150 remove the bottom fixing bolt in the trailer side panel (as in **Photo 1**) and use this as the bottom fixing hole for the support bar plate. For other models, once the vertical support bar is positioned mark the position of the bottom hole and drill carefully.
4. Fix the bottom hole of the vertical support bar in place. If fitting through the tube use an M8x40 bolt with locking nut and washer. If fitting through the plate use an M8x25 bolt with locking nut and washer. NOTE: In all cases the bolt head should be facing outwards to prevent injury when in use.
5. Align the front of the support bar with the face of the front panel so they are level or parallel with each other. This will ensure the support bar is vertical. Then mark and drill an upper mounting hole (either through the top hole of the plate or the tube) in the same way as 1 above.
6. Offer up one of the bracing bars to the top hole in the plate and fix the vertical support bar and bracing bar together using an M8x25 bolt and locking nut. If you are not using the upper tube mounting hole it is also possible to fix the vertical support bar and bracing bar in place through the trailer side panel using an M8x40 bolt and locking nut, again with the bolt head outwards. See **Photo 2**.
7. Position the lower end of the bracing bar so its hole is central against the trailer base panel channel. Mark and drill a hole in the base panel, then fix the bracing bar in position using an M8x25 bolt and locking nut. See **Photo 2**.
8. Repeat on the other side of the trailer.
9. Slide the 2 horizontal support bars together as shown in **Photo 3** and bolt together to the correct width using 2 M8x15 bolts and locking nuts. The nuts should be inside the channel.
10. Offer up the assembled horizontal support bars to the holes in the vertical support bars with the open side of the channel facing the rear of the trailer.

NOTE : The ladder should rest on the horizontal support bars when being carried. The height of the support bars should be set so that the ladder easily clears the roof of the towing vehicle whilst not being too high. There are 3 pre-drilled height settings in the vertical support bars to assist with this. More can be drilled if necessary.

11. Fit the horizontal support bars to the vertical support bars at the desired height using 4 M8x40 bolts and locking nuts. The bolt heads should be facing outwards to prevent injury. See **Photo 4**.

12. Fully tighten all nuts and bolts.

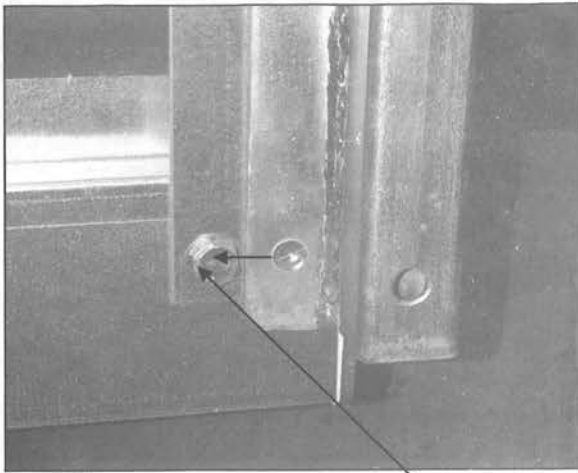


Photo 1 – For MP6810/SY150 remove this bolt

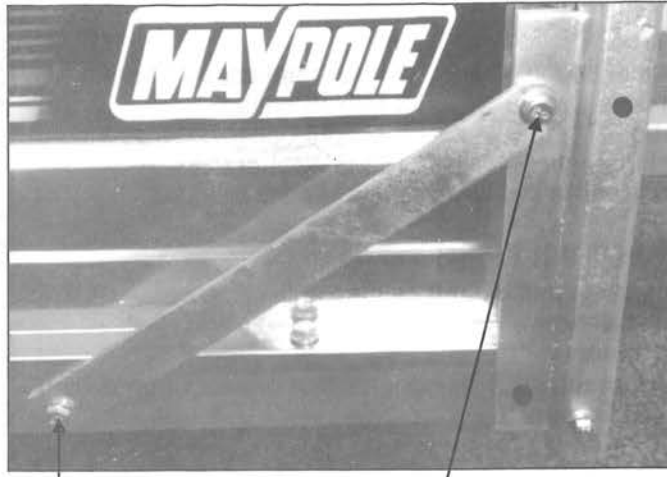


Photo 2 – All trailers will require the top of the bracing bar to be secured through the top hole in the plate & the trailer side panel. The bottom of the bracing bar is bolted to the base panel

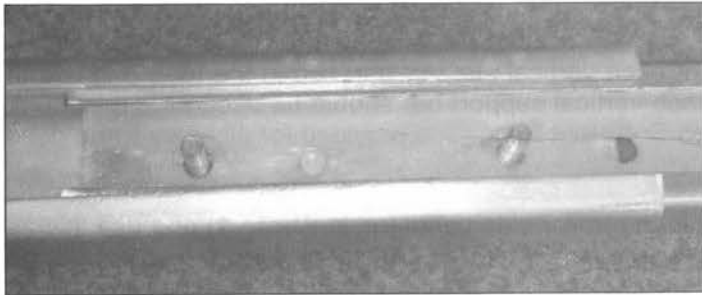


Photo 3 – Horizontal support bars fitted together

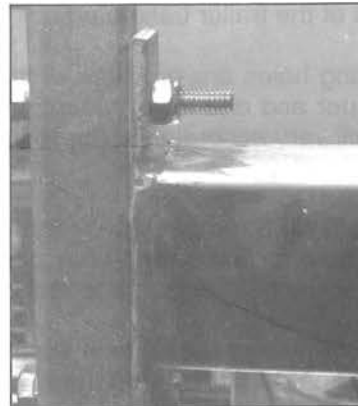


Photo 4 – Horizontal support bars fitted to vertical support bars

IMPORTANT SAFETY ADVICE

- Ensure that all nuts & bolts are fully tightened before each trip.
- Do not use the ladder rack or trailer if any part is worn or damaged.
- Only use this ladder rack for its intended purpose on the specified models of trailer.
- The security of the load is the driver's responsibility. To prevent accidents or injury ensure all ladders are correctly and securely strapped to the ladder rack and, if necessary, also to the trailer body further back. Remember, the ladder must be prevented from moving when the vehicle is in motion and especially when cornering or braking.
- This product is only suitable for the carrying of ladders and other similar items to a maximum capacity of 35kg. Do not overload this product or your trailer.
- Maintain a moderate & appropriate driving speed and drive with extra care. Avoid hard cornering and sudden heavy braking.
- If in doubt, contact your retailer for advice.